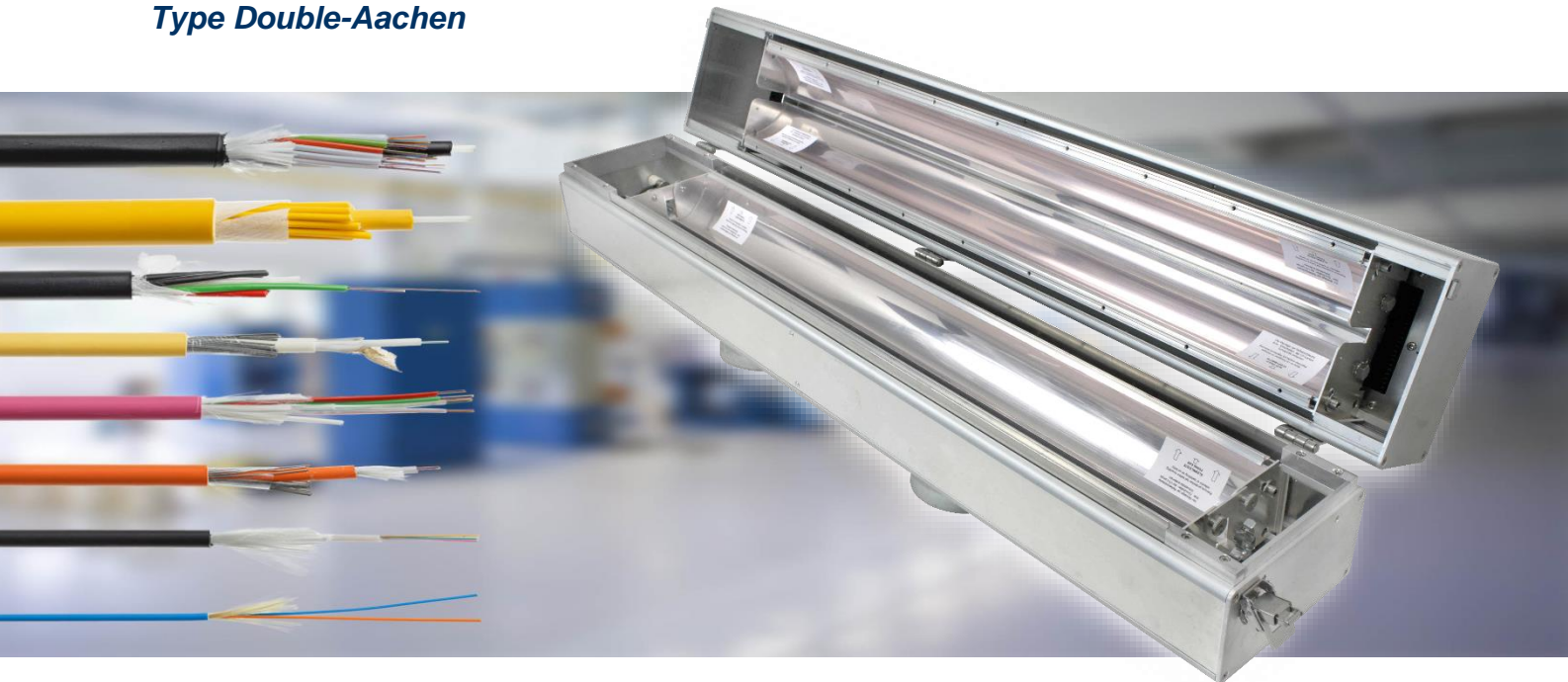


Reflector unit

Double reflector unit for fibre optic curing

Type Double-Aachen

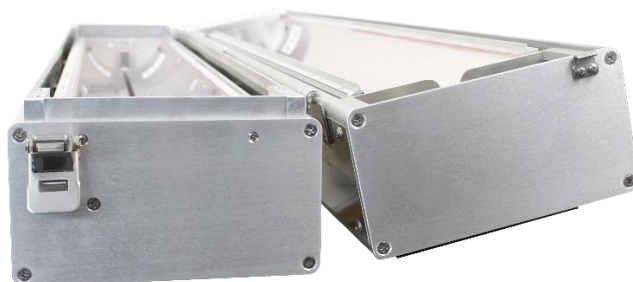


This reflector unit is designed especially for fibre optic curing applications where the fibre optic enters centrally through the UV module and is irradiated from all sides. This is achieved by two integrated semi-circular reflectors. The reflectors have highly polished anodised reflector sheets which can be easily exchanged. A single Medium Pressure Mercury Lamp is mounted inside the reflector unit. The reflector concentrates the uv light onto the surface of the fibre optic cable. The reflectors can be adjusted if necessary.

The cooling of the uv lamp is achieved by extracting air through the uv module itself. Incoming air is firstly cleaned by the specially located air filters. The air is then exhausted via an air-connection mounted on the reverse. For maintenance a hinge makes it possible to open the uv module (to feed-in the fibre optic or for maintenance, e.g. lamp change).

Main advantages

- Perfect selection of the required wavelength spectrum possible by lamp changing
- Homogeneous irradiation over the entire surface of multiple fibre optics or cables
- Proven robust design for harsh industrial conditions
- Easy maintenance due to hinge mechanism



Main technical data

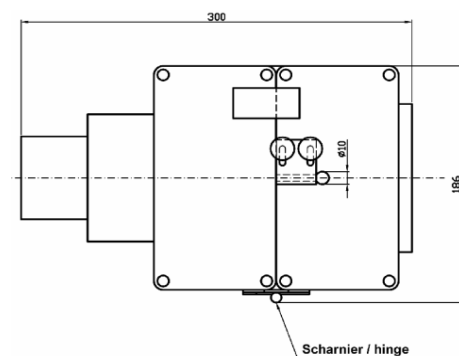
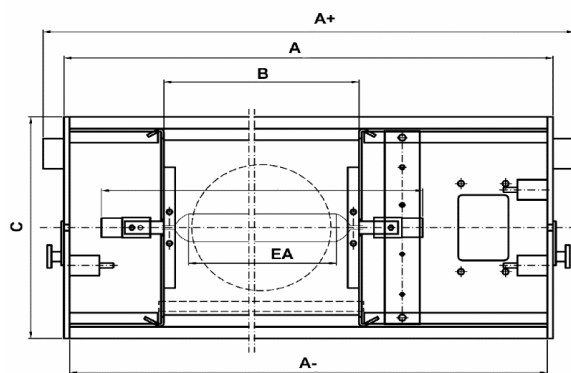
Reflector unit Double-Aachen, examples			
Art. No.			5217-259
Arc length	250 mm	300 mm	830 mm
UV Lamp power	max. 240 W/cm	max. 160 W/cm	Max. 140 W/cm
Position	*horizontal or vertical Hg only		
Cooling	Air cooled only, 1 x exhaust air connection DN 140 on reverse side **	Air cooled only, 1 x exhaust air connection DN 100 on reverse side **	Air cooled only, 2 x exhaust air connection DN 140 on reverse side**
Outer dimensions	A: 501 mm, A+: 531 mm A-: 493, B: 290, C: 176 mm	A: 551 mm, A+: 581 mm A-: 543, B: 340, C: 176 mm	A: ~ 1081 mm C: ~ 176 mm height: ~ 220 mm
Options	Mounted high voltage connector (as shown in the technical drawing and on the pictures).		

Note: Double Aachen reflector units for arc lengths up 2000 mm are available.

* For Metal Halide (Fe) lamps we recommend horizontal operation only, if requested, vertical testing or operation is customer's responsibility and risk.

** Note: The fan and pipe has to be supplied by the customer and is not Included.

Dimensions (see examples)



Examples

1. Double Aachen for 250 / 300 mm arc



2. Double Aachen for 830 mm arc

